

# Agroecology and Safe Food System Transitions in Southeast Asia (ASSET)

Making food and agricultural systems in the Southeast Asia region *more sustainable, safer and inclusive by harnessing the potential of Agroecology*

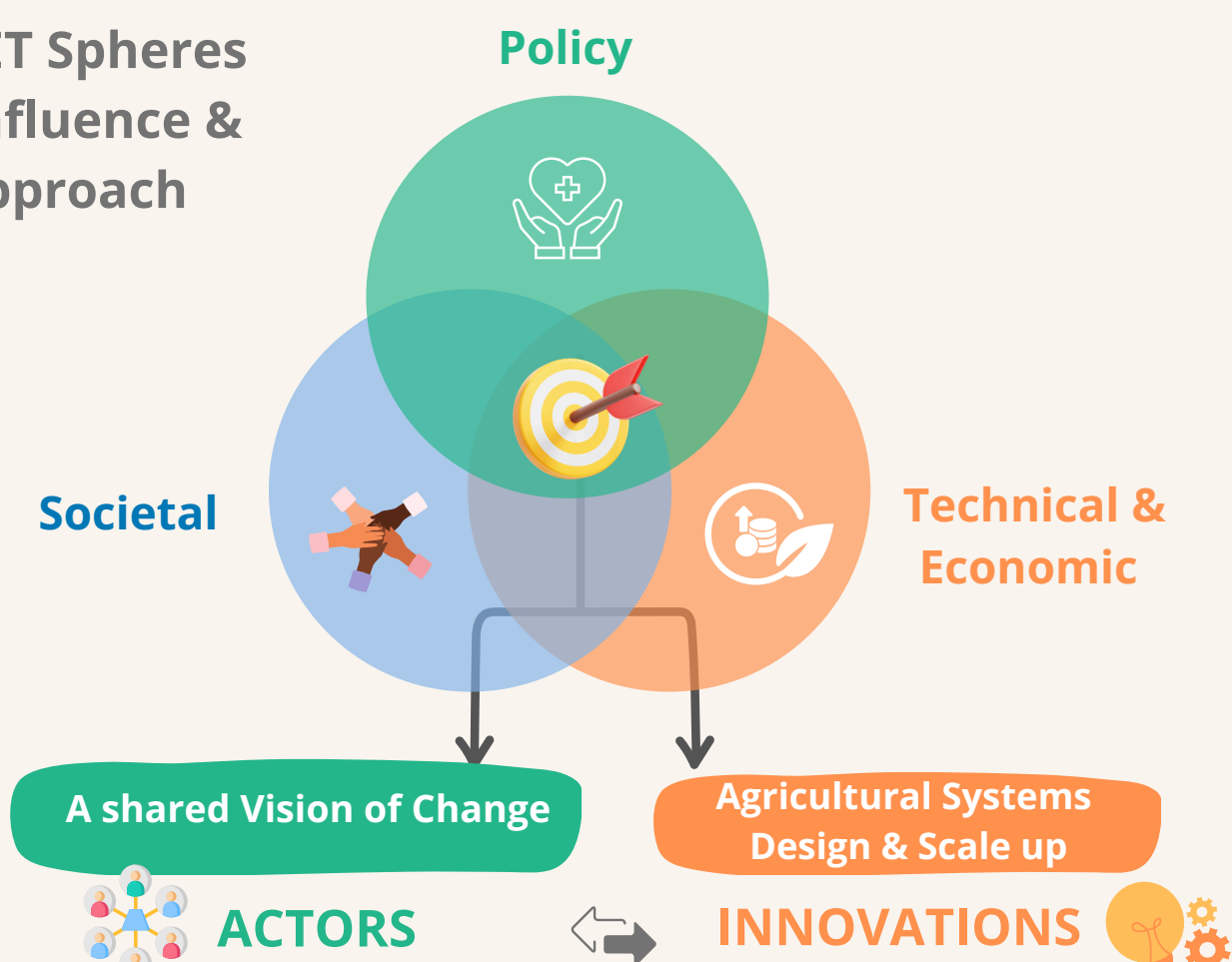
Location: Cambodia 🇰🇲 | Laos 🇱🇦 | Viet Nam 🇻🇳

Duration: 2020-2025

Coordinators: GRET & CIRAD



ASSET Spheres  
of Influence &  
Approach



## ACTORS

A Theory of Change approach for thinking collectively Agroecology futures

An approach to allow stakeholders involvement, gradually build a common vision, give meaning to the interventions, facilitate collective implementation and follow up, and involve the authorities beyond the project

At Flagship Level:

- With all ASSET partners, local authorities, farmers, local NGOs and private sector, to design flagship Agroecological program and yearly action plan

At National Level:

- With all ASSET partners and national ALiSEA networks to orientate ALiSEA's objectives at 2030



## Multi-Stakeholder Engagement



At global and ASEAN levels:

- Support, engage and build coalition with networks in Asia and the Pacific: ALiSEA, ASEA, MALICA, the Agroecology Coalition, AsiaDHRRA, AFA

At national Level:



- ALiSEA:** members actively engaged for structuring national governance of the networks, building leaderships and strengthening memberships

- Actively contribute to **National Multi-stakeholder Platforms:**

- Conservation Agriculture and Sustainable Intensification Consortium (CASIC) in Cambodia
- Sub-Sector Working Group on Agroecology (SSWG-AE) in Lao PDR
- Working groups (e.g. TWG AE) within the framework of the National Action Plan for Food Systems Transformation (NAP FST) in Viet Nam

## LESSONS LEARNED

Broad ambition of the project : agriculture and food systems / networks and pluri stakeholders / technical, economic, social and policy levels / pluri-modalities of engagement: ToC / various arrangements of partnerships

- Needs (i) time for coordination and implementation and (ii) resources to set up and monitor the diversity of interventions, the numerous partners, and (iii) manage multi level complexity
- Requires flexibility and adaptation within and between all institutions involved and with donors.

## INNOVATIONS

At territorial level, just a few examples



### Crop-Livestock Integration (CLI)

to optimize resource use, improve soil health, and enhance farm productivity.



### Diversified agroforestry models

Coffee/tea/banana and fruit trees to enhance biodiversity and improve farmers resilience



### Transition Financing

Dei Meas pilot initiative to support farmers shifting from conventional to agroecological practices

At regional and policy levels:

### "Policy Guidelines on Agroecology Transitions in ASEAN"

Design Guidelines for AE transition and support adoption at ASEAN level



## Scale



### SCALE OUT: living labs in 3 countries

More than 700 farmers engaged into demo plots in 3 countries



### SCALE UP Regional guidelines for AE transition

Adopted at regional level by ASEAN nations



### SCALE DEEP

Raising citizen's awareness through journalists training and field visits to cover agroecology and food-related topics



Grow Sustainably, Eat Healthy  
**ADOPT AGROECOLOGY**

@ASSETProjectSEA

